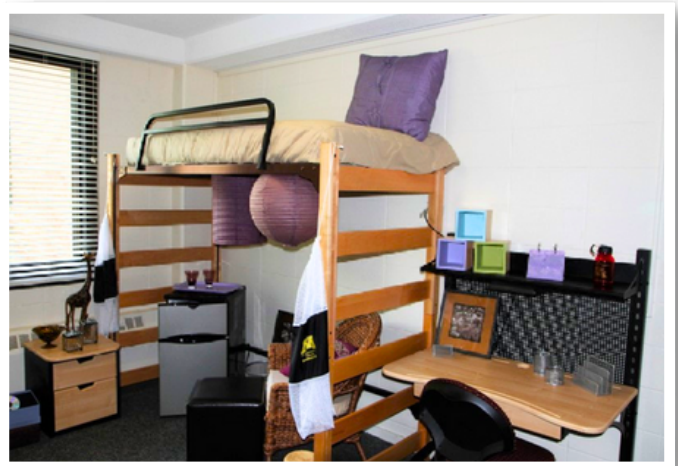
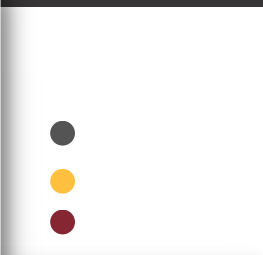




## FIRST YEAR HOUSING OPTIONS



### HERITAGE HALL

Suite Style Complex

\$2,768/semester - 4 occupants

- Two double bedrooms
  - Four beds total
- Four desks & desk chairs
- Four nightstands
- Four closets
- Two mini refrigerators
- One bathroom
  - Includes separate shower, toilet & vanity areas
- Cable TV access
- Fully-furnished living room
  - TV stand, two chairs & ottoman
- Air conditioning
- Multi-purpose lounges
- Communal kitchenettes
- Game rooms
- Laundry facilities
- Elevator accessible rooms

### SKYBERG HALL

Traditional Residence Hall

\$2,049/semester - Double room

\$2,500/semester - Single room

- Single or double rooms
- Two desks & desk chairs
- Two night stands
- Two closets
- One mini-refrigerator
- Cable TV access
- Communal bathrooms on each floor
- Multi-purpose lounges
- Communal kitchenettes
- Game rooms
- Laundry facilities
- Limited options for accessible rooms

MAKE THIS YOUR **HOME** AWAY FROM HOME

*\*All rates are subject to change for the 2024-2025 academic school year*



*Leave your quarters at home...*

**LAUNDRY IS INCLUDED!**

# UPPER CLASSMEN HOUSING OPTIONS



## EVERGREEN HALL

Apartment Style Complex  
\$3,095/semester - 4 occupants

- Two double bedrooms - four beds total
- Four desks & desk chairs
- Two bathrooms
- A shared common living room area furnished with couch and a lounge chair
- Cable TV access
- A full kitchen with refrigerator, microwave, range-top stove and dishwasher
- Air conditioning
- Laundry facilities
- Communal lounges, game rooms & study rooms
- Elevator
- Accessible rooms
- Evergreen Grill - a dining option for all students



## CENTENNIAL HALL

Apartment Style Complex  
\$2,905/semester - 4 occupants

- Two double bedrooms - four beds total
- Four desks & desk chairs
- Two bathrooms
- A shared common living room area furnished with couch & a lounge chair
- Cable TV access
- A full kitchen with refrigerator, microwave, range-top stove and dishwasher
- Communal lobby with a TV
- Laundry facilities
- Air conditioning
- Residential life offices
- Accessible rooms
- Home of the Campus Career Closet

## ON CAMPUS MEAL PLANS

- 19 meals per week + \$125 Eagle Bucks: Includes 19 meals to use per week, per semester and \$125 Eagle Bucks.
- Block 185 + \$350 Eagle Bucks: Includes 185 meals to use per semester in Brown Dining Hall and \$350 Eagle Bucks.
- Block 135 + \$575 Eagle Bucks: Includes 135 meals to use per semester in Brown Dining Hall and \$575 Eagle Bucks.
- Block 90 + \$515 Eagle Bucks: Includes 90 meals to use per semester in Brown Dining Hall plus \$515 Eagle Bucks.

## COMMUTER MEAL PLANS

- Block 50: Includes 50 meals to use per semester in Brown Dining Hall.
- Block 25: Includes 25 meals to use per semester in Brown Dining Hall.
- Block 20 + \$100 Eagle Bucks: Includes 20 meals to use per semester in Brown Dining Hall and \$100 Eagle Bucks.

### STUDENT SEMESTER COST

\$2,644

\$2,476

\$2,198

\$1,619

\$534

\$270

\$341

First Year (<24 credit hours) and first semester international students living in residence halls must be on a meal plan and are only eligible to choose the 19 Meals/Week or Block 185 Plans. Eagle Bucks will roll over from Fall to Spring semesters, but do not roll over from year to year. Eagle Bucks can be used in any of our retail locations. \*All prices are subject to change without notice.